



INSTITUTO FEDERAL
Rondônia



MINISTÉRIO DA EDUCAÇÃO
Secretaria de Educação Profissional e Tecnológica
Instituto Federal de Educação, Ciência e Tecnologia de Rondônia

Campus Colorado do Oeste
Coordenação do Curso Engenharia Agrônoma

LUIZ FILIPE FERREIRA EVANGELISTA

**USE OF COLORED FRUIT-BAITED TRAPS FOR TRAPPING
CERAMBYCIDAE (COLEOPTERA: CHRYSOMELOIDEA)
REVEALS SIX NEW RECORDS FOR THE STATE OF
RONDÔNIA, SOUTHWESTERN BRAZILIAN AMAZON**

COLORADO DO OESTE
2025

LUIZ FILIPE FERREIRA EVANGELISTA

**USE OF COLORED FRUIT-BAITED TRAPS FOR TRAPPING
CERAMBYCIDAE (COLEOPTERA: CHRYSOMELOIDEA)
REVEALS SIX NEW RECORDS FOR THE STATE OF
RONDÔNIA, SOUTHWESTERN BRAZILIAN AMAZON**

Artigo Científico entregue como Trabalho de Conclusão de Curso ao Instituto Federal de Educação, Ciência e Tecnologia de Rondônia (IFRO) - *Campus* Colorado do Oeste, como requisito parcial para obtenção do título de Bacharel em Engenharia Agrônômica sob a orientação do professor Anderson Puker.

COLORADO DO OESTE
2025

Ficha catalográfica elaborada pelo Sistema Gerador de Ficha Catalográfica do IFRO.

Evangelista, Luiz Filipe Ferreira.

Use of colored fruit-baited traps for trapping
Cerambycidae (Coleoptera: Chrysomeloidea) reveals six new records
for the state of Rondônia, southwestern Brazilian Amazon / Luiz Filipe
Ferreira Evangelista. - Colorado do Oeste, 2025.
16 f. : il.

Orientador(a): Prof. Dr. Anderson Puker.

Trabalho de Conclusão de Curso (Bacharelado em Engenharia
Agrônômica) – Instituto Federal de Educação, Ciência e Tecnologia de
Rondônia - IFRO, Colorado do Oeste, 2025.

1. Floresta Amazônica. 2. Cerambycinae. 3. Amostragem
de insetos. 4. Lamiinae. 5. Besouros-de-chifre-longo. I. Puker,
Anderson (orient.). II. Instituto Federal de Educação, Ciência e
Tecnologia de Rondônia - IFRO. III. Título.

Bibliotecário(a) Responsável: Juliana Machado da Silva Sasset, CRB-11/1140

LUIZ FILIPE FERREIRA EVANGELISTA

**USE OF COLORED FRUIT-BAITED TRAPS FOR TRAPPING
CERAMBYCIDAE (COLEOPTERA: CHRYSOMELOIDEA)
REVEALS SIX NEW RECORDS FOR THE STATE OF
RONDÔNIA, SOUTHWESTERN BRAZILIAN AMAZON**

Artigo Científico entregue como Trabalho de Conclusão de Curso ao Instituto Federal de Educação, Ciência e Tecnologia de Rondônia (IFRO) - *Campus* Colorado do Oeste, como requisito parcial para obtenção do título de Bacharel em Engenharia Agrônômica, sob a orientação do Professor Anderson Puker.

Aprovado em: **09/04/2025** pela banca examinadora.



Documento assinado digitalmente
ANDERSON PUKER
Data: 25/02/2026 10:34:54-0300
Verifique em <https://validar.iti.gov.br>

Prof. Me. Anderson Puker
Orientador



Documento assinado digitalmente
KAYENA DELAIX ZAQUEO
Data: 27/02/2026 18:47:57-0300
Verifique em <https://validar.iti.gov.br>

Profa. Dra. Kayena Delaix Zaqueo
Membro 1



Documento assinado digitalmente
DANIELA DUARTE MONTEIRO REZENDE
Data: 25/02/2026 10:43:41-0300
Verifique em <https://validar.iti.gov.br>

Dra. Daniela Duarte Monteiro Rezende
Membro 2



Use of colored fruit-baited traps for trapping Cerambycidae (Coleoptera: Chrysomeloidea) reveals six new records for the state of Rondônia, southwestern Brazilian Amazon

ANDERSON PUKER^{1,2*}, LUIZ FILIPE FERREIRA EVANGELISTA^{1,3}, CAMILA DA SILVA CARLI^{4,5}, MARIO CUPELLO^{6,7} & MARCELA LAURA MONNÉ^{4,8,9}

¹Instituto Federal de Educação, Ciência e Tecnologia de Rondônia, Colorado do Oeste 76.993-000, Rondônia, Brazil.

²✉ pukeragro@gmail.com; <https://orcid.org/0000-0002-9588-4202>

³✉ luizffevangelista@gmail.com; <https://orcid.org/0009-0007-5820-3133>

⁴Departamento de Entomologia, Museu Nacional, Universidade Federal do Rio de Janeiro, Rio de Janeiro 20.941-160, Rio de Janeiro, Brazil.

⁵✉ camilasilvacarli@gmail.com; <https://orcid.org/0000-0001-7164-109X>

⁶Department of Entomology, Texas A&M University, College Station, TX 77843-2475, USA.

⁷✉ mcupello@hotmail.com; <https://orcid.org/0000-0002-7016-134X>

⁸✉ mlmonne2@gmail.com; <https://orcid.org/0000-0003-2103-4878>

⁹Fellow of the Conselho Nacional de Desenvolvimento Científico e Tecnológico, CNPq.

*Corresponding author

Abstract

In this study, we used colored fruit-baited traps for trapping cerambycid beetles (Coleoptera: Chrysomeloidea: Cerambycidae) in the southwestern Brazilian Amazon, state of Rondônia, northern Brazil. Our collections revealed six new records for the state, *Sphallotrichus bidens* (Fabricius, 1801), *Cosmoplatidius abare* Napp & Martins, 2006, *Chydarteres dimidiatus dimidiatus* (Fabricius, 1787), *Neolampedula obliquator* (Fabricius, 1801), *Deltosoma fernandezi* Dalens & Giuglaris, 2014, and *Corimbion nigroapicatum* Martins, 1970. The latter two also represent new records for Brazil. Photographs of the dorsal habitus of the six species are provided. We also provide distribution maps for *D. fernandezi*, previously recorded only from French Guiana, and *C. nigroapicatum*, previously known from Colombia and Bolivia. The use of colored fruit-baited traps for trapping Cerambycidae is briefly discussed in the light of published data and the new information provided herein.

Key words: Amazon rainforest, Cerambycinae, Insect sampling, Lamiinae, Longhorn beetles, New distribution records

Introduction

Cerambycidae (Coleoptera: Chrysomeloidea), commonly known as longhorn beetles, comprise one of the largest families of Coleoptera, with approximately 39,000 described species (Tavakilian & Chevillotte, 2024). In the Neotropical region, more than 8,000 species in 1,550 genera have been described, of which approximately 700 species have been recorded for the state of Rondônia, southwestern Brazilian Amazon (Monné, 2024a, b, c).

Although several taxonomic papers and catalogs have recorded cerambycids for the state of Rondônia (e.g., Napp & Martins, 2006; Monné *et al.*, 2022; Monné, 2024a, b, c; Nascimento *et al.*, 2024), few faunal inventories have been carried out focusing on the group by using some specific collecting methodology. For example, Souza & Silva (2012) using Malaise and light traps collected 61 cerambycid species from the Municipal Natural Park of Porto Velho, of which 33 species were new records for Rondônia. Furthermore, a checklist by Souza *et al.* (2021) revealed 166 species of Cerambycidae deposited in the entomological collection of the Federal University of Rondônia, 58 of which were new records for the state, and four for Brazil.

Several sampling methods have been used for trapping longhorn beetles around the world (e.g., Reddy, 2007; Dodds *et al.*, 2010; Sakalian & Georgiev, 2011; Nehme *et al.*, 2014; Rassati *et al.*, 2019), including the use of traps

baited with fermented fruits (e.g., Allemand & Aberlenc, 1991; Touroult & Dalens, 2012; Wong & Hanks, 2016). Fruit-baited traps have been used in diversity studies and faunal inventories of cerambycid beetles in different Neotropical landscapes (e.g., Gonçalves & Louzada, 2005; Nascimento & Bravo, 2015; Evangelista *et al.*, 2021), including Amazon rainforest (Touroult & Dalens, 2012). These traps are generally constructed from plastic bottles containing openings of sufficient size to allow insects to enter (Allemand & Aberlenc, 1991; Touroult & Witté, 2020; Puker *et al.*, 2021), and are baited with different fermented fruits (Allemand & Aberlenc, 1991; Touroult & Dalens, 2012; Evangelista *et al.*, 2021). However, to the best of our knowledge, colored fruit-baited traps have not been used for trapping Cerambycidae in the Amazon rainforest.

The knowledge of Cerambycidae fauna is still incipient in the Amazon rainforest as a whole (e.g., Souza *et al.*, 2021; Monné *et al.*, 2022; Nascimento *et al.*, 2024), and the improvement of sampling techniques, such as trap colors, could aid in efficiently capturing these beetles. In this study, we used colored fruit-baited traps for trapping Cerambycidae in the southwestern Brazilian Amazon, state of Rondônia, northern Brazil. Our collections reveal a further six new records for the state, two of them also representing new records for Brazil: *Deltosoma fernandezi* Dalens & Giuglaris, 2014 and *Corimbion nigroapicatum* Martins, 1970.

Material and Methods

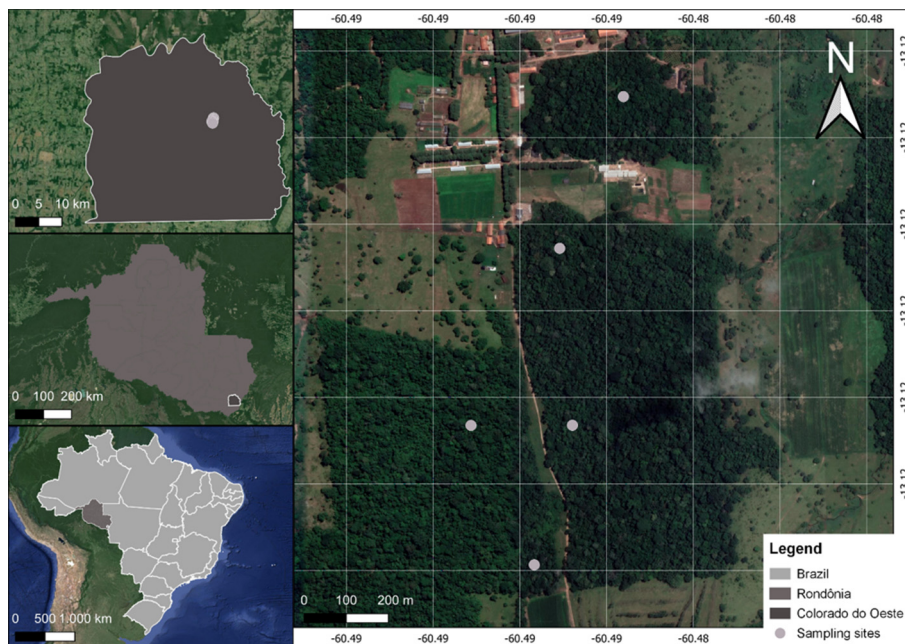
Area of study

Rondônia, located in the southwestern Brazilian Amazon, is one state of the 27 federative units of Brazil (26 states and one Federal District), covering a territorial extension of 237,754 km² (IBGE, 2022). The native vegetation is mostly characterized by Open Ombrophylous Forest, Dense Ombrophylous Forest, Semideciduous Seasonal Forest, and Cerrado (Brazilian savanna) (IBGE, 2006). Throughout history, land use in Rondônia was based on the exploitation of wood typical of Amazonian vegetation and the subsequent implementation of exotic pastures destined for cattle-ranching (Souza, 2020). The replacement of native vegetation by exotic pasturelands started during the 1970s as part of the expansion and colonization of the state of Rondônia (Souza, 2020). Currently, the landscape is made up of fragments of native vegetation ranging through a wide variety of sizes, shapes and degrees of conservation. Such forest fragments are immersed in an agricultural matrix (e.g., mainly soybean, corn, and coffee crops) and exotic pastures for livestock farming.

Sampling sites

All specimens of the new records were collected in the municipality of Colorado do Oeste, Rondônia, northern Brazil (13°07'15"S, 60°32'42"W) (Fig. 1a). The climate of the region, according to the Köppen classification, is *Am* – tropical wet (tropical monsoon climate) (Alvares *et al.*, 2013). The average annual temperature is 24.3 °C (22.0–27.5 °C) (Franca, 2015). Mean annual rainfall is ca. 2,250 mm, with a well-defined dry season corresponding to the months of June (mean monthly rainfall: 20 mm), July (12 mm) and August (29 mm), and highest rainfall is recorded in December (272 mm), January (305 mm), and February (281 mm) (Franca, 2015).

We sampled cerambycid beetles in five Amazon rainforest areas (*terra firme*; unflooded forest), separated by a distance of at least 300 m from each other, but not more than 1,200 m (Fig. 1a). The forest areas are relatively well-conserved and belong to the Instituto Federal de Educação, Ciência e Tecnologia de Rondônia (IFRO) – *Campus* Colorado do Oeste (Fig. 1a). The total area of the *Campus* is ca. 242 ha, of which 80 ha are dedicated to a forest reserve. The IFRO forest reserve has only a few ecological trails that run through its interior, and is used for practical classes and field courses from different areas, such as botany, ecology, and entomology (Fig. 1b).



(a)



(b)

FIGURE 1. (a) Geographic location of the sampling sites of cerambycid beetles in the southwestern Brazilian Amazon, municipality of Colorado do Oeste, Rondônia, northern Brazil; (b) Habitat (Amazon rainforest fragment) where cerambycids were sampled.

Trap and bait preparation

For the traps, we use transparent PET bottles for soft drinks of standard shape and volume (2 l) (Fig. 2a). The labels were removed and the bottles were cleansed with water and detergent, and left to dry. After drying, we cut four 4 × 8 cm side openings on each bottle, these openings located approximately 12 cm from the bottle's base (Fig. 2a) (Puker *et al.*, 2021). Furthermore, a small hole (2 mm diameter) was made in the bottle cap to pass the nylon line (fishing line) used to suspend the traps from the tree branches. Subsequently, the bottles were either left transparent (unpainted, used as control) or were painted with spray paint in the following colors: blue, yellow, and red (Fig. 2a).

As bait, we use a fermented mixture of pineapple and sugarcane juice. This bait has been successfully used for trapping Cerambycidae in the Brazilian Cerrado (see Evangelista *et al.*, 2021). For the bait preparation, we used ripe pineapples whose pulp was straw yellow and very juicy, exuding a characteristic odor (Puker *et al.*, 2020). The unpeeled fruits were chopped into small pieces (ca. 1 cm), and then mixed with sugarcane juice in a 1:1 (v/v) proportion (adapted from Puker *et al.*, 2020). The bait was then placed in plastic containers and allowed to ferment for 72 h before being taken to the field (Puker *et al.*, 2020).

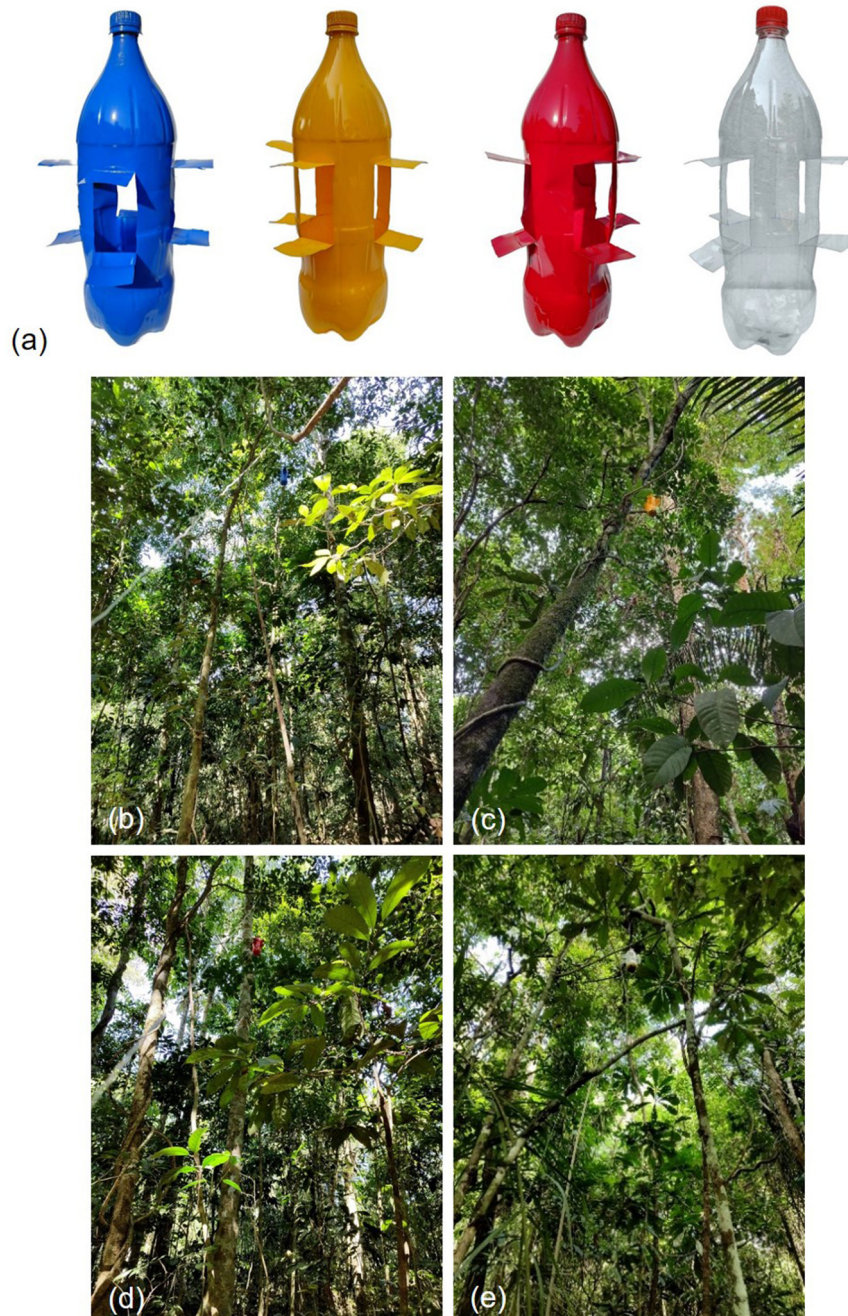


FIGURE 2. (a) Colored traps used to collect cerambycid beetles in this study; (b) the blue, (c) yellow, (d) red, and (e) transparent traps installed in the understory (4.5 m height) of the Amazon rainforest.

Cerambycidae trapping

Inside each forest area, a sampling point was set at least 50 m away from its edge (Fig. 1a). In each sampling point, four fruit-baited traps (i.e., blue, yellow, red, and transparent-control) were installed (Figs. 2b–e). The traps were hung from tree branches by using a fishing line 4.5 m above the ground, and spaced ca. 4 m from each other in a

square shape. To measure the traps installation height, we used a 4.5 m long stick with a forked (“Y”) tip, which was used as a template to adjust the height. Then, the trap was placed at the tip of the stick, and taken until it passed over the selected branch. Next, we adjusted the height of the trap by positioning the stick immediately beside the side openings of the trap. We hung the traps 4.5 m high because it optimizes the fieldwork by facilitating manual installation (Puker *et al.*, 2020). Furthermore, previous studies have demonstrated that this trap installation height allows sampling the representative diversity of Cerambycidae in the Amazon rainforest (see Touroult & Dalens, 2012).

Sampling was carried out monthly between February 2022 and January 2024, resulting in a sampling effort of 20 traps per month and 480 traps in total (i.e., 4 traps/forest area × 5 forest areas × 24 sampling months) over the course of the study. In each sampling, the traps were baited with 300 ml of the bait (mixture of pineapple and sugarcane juice) that had been previously prepared (as described above). Traps remained active in the field for seven consecutive days, when the full content of the traps (i.e., bait and captured insects) was placed in labeled plastic bags containing ethanol fuel for subsequent sorting and taxonomic identification (next section).

Taxonomic treatments

After sorting, the specimens were pinned and labeled. The cerambycids were separated into morphospecies, and subsequently sent to the Museu Nacional, Universidade Federal do Rio de Janeiro—MNRJ (Rio de Janeiro, Brazil) for identification by one of us (Marcela L. Monné). Species-level identifications were based on available descriptions and/or identification keys (e.g., Martins & Monné, 2005; Napp & Martins, 2006; Dalens & Giuglaris, 2014; García & Santos-Silva, 2022) and verified through comparison with photographs of the type material available on Bezark (2024). The specimens were deposited in the entomological collection of the IFRO—*Campus* Colorado do Oeste (curator: Anderson Puker) and also in the MNRJ (curator: Marcela L. Monné). In the “material examined” section under each species below, only the MNRJ specimens used for identification are listed; total numbers of specimens captured per species and trap color are provided in Table 1.

Images and maps

Specimens were photographed with a Leica DFC 500 digital camera attached to a Leica MZ16 stereoscope. The images were edited with Leica LAS 3D Viewer and LAS Montage v. 4.7 software. The distribution maps are based on the material examined and literature records (i.e., Martins, 1970; Dalens & Giuglaris, 2014; Taboada-Verona & Botero, 2020). Records lacking coordinates were georeferenced using Google Earth Pro v. 7.3.6.9796 (64-bit), and the maps were made using QGIS v. 3.38.0-Grenoble.

Results

We collected 1,588 specimens of Cerambycidae, belonging to 18 species, 16 genera, and three subfamilies (Cerambycinae, Lamiinae, and Prioninae) (Table 1). Of the 18 sampled species, six represent new records for the state of Rondônia, two of which are furthermore new to Brazil as a whole: *Deltosoma fernandesi* Dalens & Giuglaris, 2014 (Cerambycinae) and *Corimbion nigroapicatum* Martins, 1970 (Cerambycinae) (Table 1).

Below is the list of new state and country records, including known geographical distributions, brief diagnoses, and the trap colors that the specimens were collected in. Records are organized and presented alphabetically by subfamily, tribe, and, when established, subtribe, as follows:

TABLE 1. List of the species of cerambycid beetles collected with different fruit-baited trap colors in the southwestern Brazilian Amazon. Asterisk (*) indicates new records for the state of Rondônia, northern Brazil.

Subfamilies Species	Trap colors				Total
	Blue	Yellow	Red	Transparent	
Cerambycinae Latreille, 1802					
<i>Aglaoschema mimos</i> Napp, 2008	1	7	2	4	14
<i>Ceragenia bicornis</i> (Fabricius, 1801)	154	309	238	256	957
<i>Chydarteres dimidiatus dimidiatus</i> (Fabricius, 1787)*	3	4	4	11	22
<i>Corimbion nigroapicatum</i> Martins, 1970*	0	1	0	0	1
<i>Cosmoplatidius abare</i> Napp & Martins, 2006*	51	138	113	175	477
<i>Cosmoplatidius lycoides</i> (Guérin-Méneville, 1844)	1	0	0	2	3
<i>Deltosoma fernandezi</i> Dalens & Giuglaris, 2014*	0	1	0	1	2
<i>Lissonotus bisignatus</i> Dupont, 1836	2	1	0	0	3
<i>Sphallotrichus bidens</i> (Fabricius, 1801)*	3	8	3	7	21
<i>Sphallotrichus sericeotomentosus</i> Fragoso, 1995	0	3	1	3	7
<i>Styliceptis sericata</i> (Pascoe, 1859)	5	6	4	14	29
<i>Susuacanga octoguttata</i> (Germar, 1821)	6	4	4	11	25
<i>Trachyderes succinta succinta</i> (Linnaeus, 1758)	2	3	2	4	11
Lamiinae Latreille, 1825					
<i>Colobothea</i> sp.	0	0	1	0	1
<i>Eutrypanus triangulifer</i> Erichson, 1847	0	0	1	0	1
<i>Neolampedusa obliquator</i> (Fabricius, 1801)*	0	1	0	2	3
<i>Oreodera</i> sp.	0	0	0	1	1
Prioninae Latreille, 1802					
<i>Orthomegas cinnamomeus</i> (Linnaeus, 1758)	0	4	2	4	10
Number of individuals	228	490	375	495	1,588
Number of species	10	14	12	14	18

Cerambycidae Latreille, 1802

Cerambycinae Latreille, 1802

Cerambycini Latreille, 1802

Sphallotrichina Martins & Monné, 2005

Sphallotrichus bidens (Fabricius, 1801)

Fig. 3

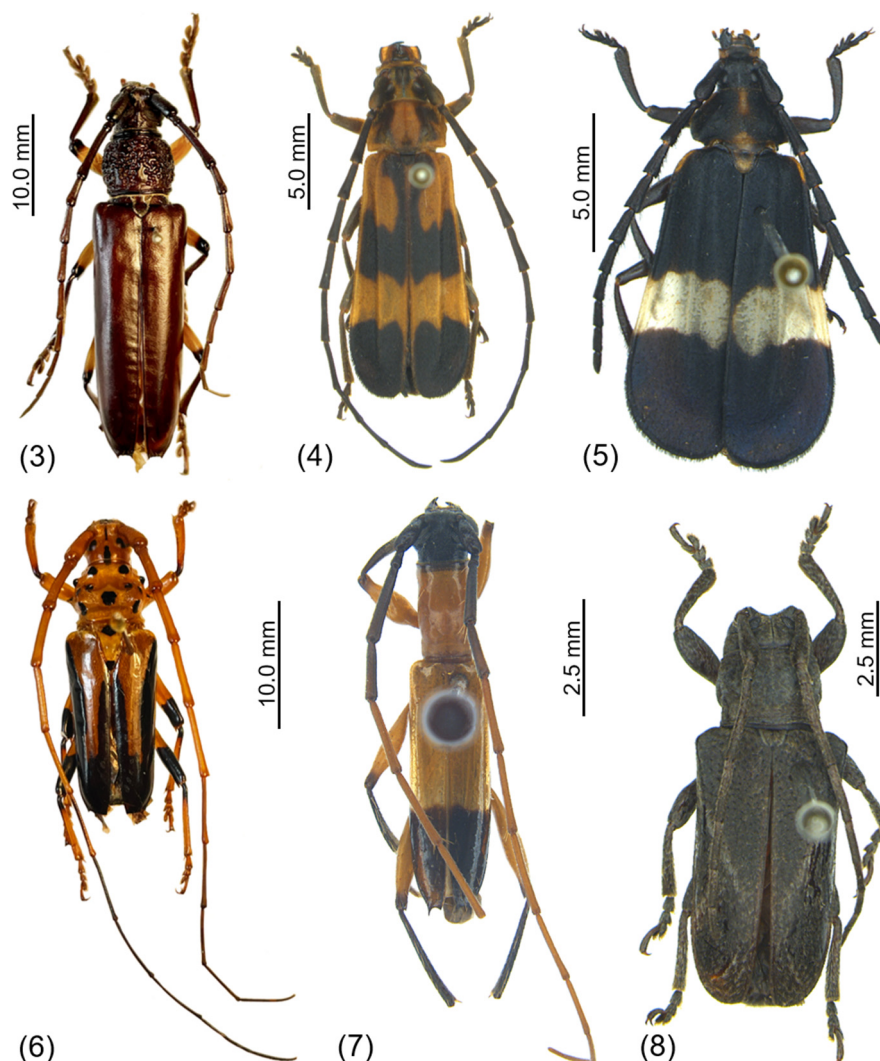
Distribution. Venezuela, Colombia, French Guiana, Brazil (Acre, Amazonas, Amapá, Pará, Mato Grosso, Maranhão, Ceará, Bahia, Minas Gerais, São Paulo, Santa Catarina), and Bolivia (Monné, 2024a; Tavakilian & Chevillotte, 2024).

New state record. BRAZIL—Rondônia.

Diagnosis. *Sphallotrichus bidens* (Fig. 3) can be recognized among its congeners by the pronotum glabrous, coarsely and densely punctate at sides; femora bicolorous, reddish orange with apical third black (Martins & Monné, 2005).

Material examined. BRASIL: RO, Colorado do Oeste, 13°07'25''S, 60°29'21''W, Amazon forest, 1 male, 1 female, fruit-baited trap, 08.X.2022, D. Brandão, A. Puker, J. Evangelista, L. Evangelista, and C. Mattos leg. (MNRJ-ENT7-47657; MNRJ-ENT7-47658).

Trap colors. Specimens of *S. bidens* were collected in all trap colors (Table 1).



FIGURES 3–8. Dorsal habitus of Cerambycidae species recorded for the first time in Rondônia, northern Brazil. (3) *Sphalotrichus bidens* (Fabricius, 1801); (4) *Cosmoplatidius abare* Napp & Martins, 2006; (5) *Deltosoma fernandezi* Dalens & Giuglaris, 2014; (6) *Chydarteres dimidiatus dimidiatus* (Fabricius, 1787); (7) *Corimbion nigroapicatum* Martins, 1970; and (8) *Neolampedula obliquator* (Fabricius, 1801).

Compsocerini Thomson, 1864

Cosmoplatidius abare Napp & Martins, 2006

Fig. 4

Distribution. Brazil (Amazonas, Pará, Mato Grosso), Peru, and Bolivia (Monné, 2024a; Tavakilian & Chevillotte, 2024).

New state record. BRAZIL—Rondônia.

Diagnosis. *Cosmoplatidius abare* (Fig. 4) can be recognized by the head dorsally black, scape finely, densely punctate with yellow setae, pronotal disc with dense setae and elytra with two dorsal carinae. Males with mandibles deeply depressed, external margin elevated and angulated, inner margin with conspicuous teeth; antennomeres IX–XI depressed and wider than the VIII; antennomere XI longer than X (Napp & Martins, 2006).

Material examined. BRASIL: RO, Colorado do Oeste, 13°07'22"S, 60°29'14"W, Amazon forest, 1 female, fruit-baited trap, 09.IV.2022, D. Brandão, A. Puker, J. Evangelista, L. Evangelista, and C. Mattos leg. (MNRJ-ENT7-47659); 13°07'25"S, 60°29'17"W, Amazon forest, 1 female, fruit-baited trap, 26.V.2022, D. Brandão, A. Puker, J. Evangelista, L. Evangelista, and C. Mattos leg. (MNRJ-ENT7-47660); 13°07'31"S, 60°29'17"W, Amazon forest, 1 male, fruit-baited trap, 25.III.2023, L. Evangelista, A. Puker, D. Brandão, J. Evangelista, and C. Mattos leg. (MNRJ-ENT7-47661); 13°07'25"S, 60°29'17"W, Amazon forest, 1 male, fruit-baited trap, 24.IV.2023, L. Evangelista, A. Puker, D. Brandão, J. Evangelista, and C. Mattos leg. (MNRJ-ENT7-47662); 13°07'25"S, 60°29'21"W, Amazon forest, 1 male, fruit-baited trap, 10.VI.2023, L. Evangelista, A. Puker, D. Brandão, J. Evangelista, and C. Mattos leg. (MNRJ-ENT7-47663).

Trap colors. Specimens of *C. abare* were collected in all trap colors (Table 1).

Pteroplatini Thomson, 1861

Deltosoma fernandezi Dalens & Giuglaris, 2014

Figs. 5, 9

Distribution. French Guiana (Monné, 2024a; Tavakilian & Chevillotte, 2024).

New country record. BRAZIL—Rondônia (Fig. 9).

Diagnosis. *Deltosoma fernandezi* (Fig. 5) is recognized by the following combination of characters: elytra black with transverse whitish band, clearly enlarged towards apex, apex flattened; pronotum black with median longitudinal stripe orangish and interrupted before middle; humeral orangish maculae very narrowed, with no discal extension; legs black, except base of femora orangish (Dalens & Giuglaris, 2014).

Material examined. BRASIL: RO, Colorado do Oeste, 13°07'25"S, 60°29'14"W, Amazon forest, 1 female, fruit-baited trap, 08.X.2022, D. Brandão, A. Puker, J. Evangelista, L. Evangelista, and C. Mattos leg. (MNRJ-ENT7-47664).

Trap colors. Specimens of *D. fernandezi* were collected in yellow and transparent traps (Table 1).

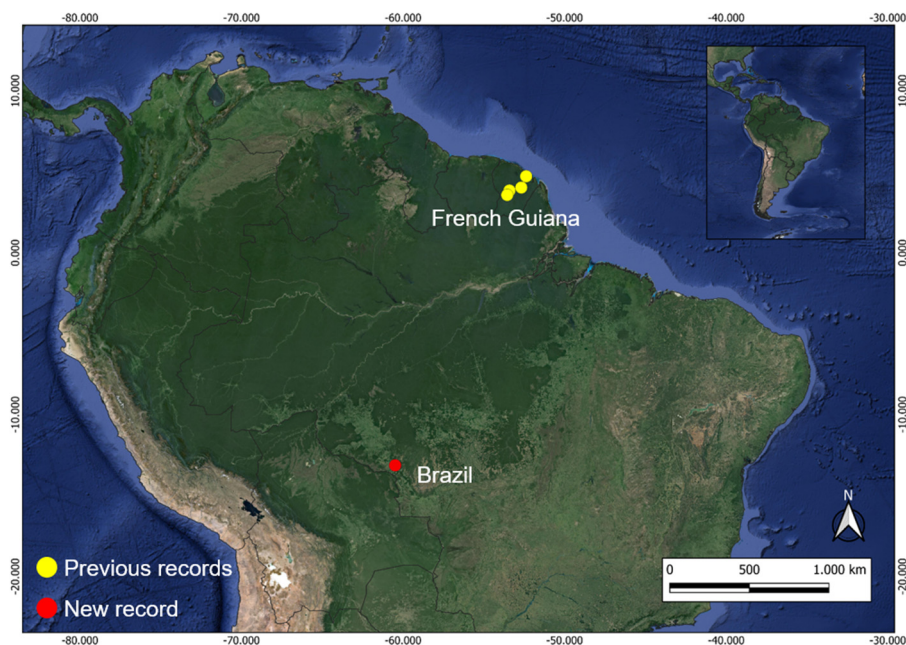


FIGURE 9. The known geographical distribution of *Deltosoma fernandezi* Dalens & Giuglaris, 2014.

Trachyderini Dupont, 1836

Trachyderina Dupont, 1836

Chydarteres dimidiatus dimidiatus (Fabricius, 1787)

Fig. 6

Distribution. Venezuela, Colombia, French Guiana, Brazil (Amazonas, Pará, Mato Grosso, Goiás, Distrito Federal, Piauí, Pernambuco, Bahia, Minas Gerais, Espírito Santo, Rio de Janeiro, São Paulo, Paraná, Santa Catarina, Rio Grande do Sul), Bolivia, Paraguay, Argentina, and Uruguay (Monné, 2024a; Tavakilian & Chevillotte, 2024).

New state record. BRAZIL—Rondônia.

Diagnosis. This species can be recognized among its congeners by the antennae orangish-yellow except antennomeres VII–XI black, pronotum orangish-yellow with black spots and sides of prothorax bituberculated.

Material examined. BRASIL: RO, Colorado do Oeste, 13°07'25"S, 60°29'21"W, Amazon forest, 1 male, 1 female, fruit-baited trap, 08.X.2022, D. Brandão, A. Puker, J. Evangelista, L. Evangelista, and C. Mattos leg. (MNRJ-ENT7-47665; MNRJ-ENT7-47666); same data, 1 male, 2 females, 12.XI.2022 (MNRJ-ENT7-47667; MNRJ-ENT7-47668; MNRJ-ENT7-47669).

Trap colors. Specimens of *C. dimidiatus dimidiatus* were collected in all trap colors (Table 1).

Tropidini Martins & Galileo, 2007

Compsina Martins & Galileo, 2007

***Corimbion nigroapicatum* Martins, 1970**

Figs. 7, 10

Distribution. Colombia and Bolivia (Monné, 2024a; Tavakilian & Chevillotte, 2024).

New country record. BRAZIL—Rondônia (Fig. 10).

Diagnosis. *Corimbion nigroapicatum* (Fig. 7) can be recognized among its congeners by the antennomeres III and IV, apex of femora and entire tibiae blackish (García & Santos-Silva, 2022).

Material examined. BRASIL: RO, Colorado do Oeste, 13°06'58.46"S, 60°29'09.13"W, Amazon forest, 1 male, fruit-baited trap, 08.X.2022, L. Evangelista, A. Puker, D. Brandão, J. Evangelista, and C. Mattos leg. (MNRJ-ENT7-47670).

Trap colors. The only specimen of *C. nigroapicatum* was collected in a yellow trap (Table 1).

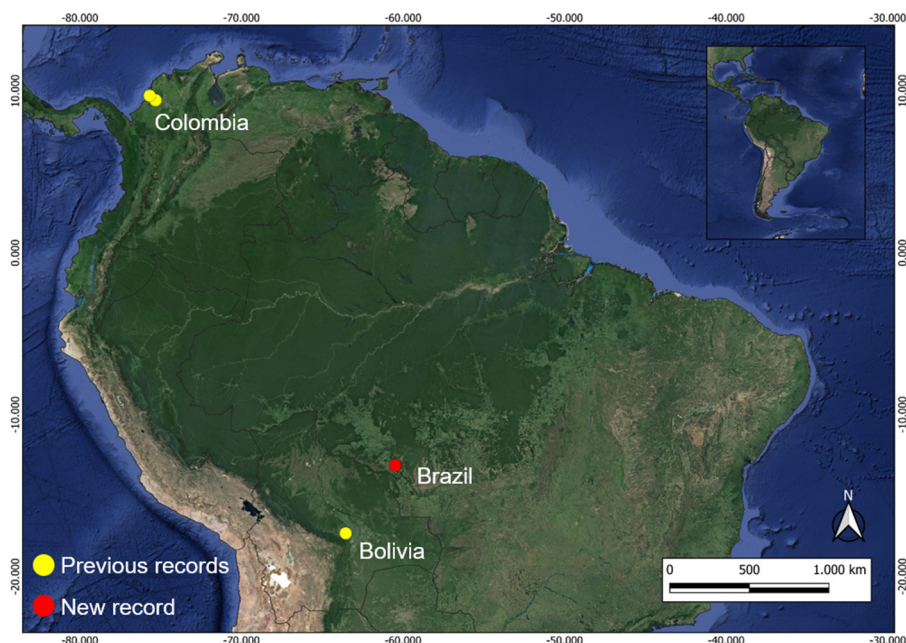


FIGURE 10. The known geographical distribution of *Corimbion nigroapicatum* Martins, 1970.

Lamiinae Latreille, 1825

Onciderini Thomson, 1860

Neolampedula obliquator (Fabricius, 1801)

Fig. 8

Distribution. French Guiana, Brazil (Amazonas, Pará), Ecuador, Peru, and Bolivia (Monné, 2024b; Tavakilian & Chevillotte, 2024).

New state record. BRAZIL—Rondônia.

Diagnosis. *Neolampedula* Monné, 2005 includes only two species, *Neolampedula lateralis* (Thomson, 1868) and *N. obliquator* (Fabricius, 1801). *Neolampedula obliquator* (Fig. 8) can be recognized by the body with pubescence dark brown and elytra with white setae forming a line extending from the humerus toward the suture and curving around the apex (Lingafelter *et al.*, 2017).

Material examined. BRASIL: RO, Colorado do Oeste, 13°07'25"S, 60°29'13"W, Amazon forest, 1 female, fruit-baited trap, 17.IX.2022, D. Brandão, A. Puker, J. Evangelista, L. Evangelista, and C. Mattos leg. (MNRJ-ENT7-47671).

Trap colors. Specimens of *N. obliquator* were collected in yellow and transparent traps (Table 1).

Discussion

In this study, the use of colored fruit-baited traps installed in the understory of the Amazon forest revealed new records of Cerambycidae for the state of Rondônia and also for Brazil. Color attractiveness in traps used for trapping Cerambycidae had been previously studied in some regions of the Northern Hemisphere. For example, in forest ecosystems in Europe (Italy), yellow- and blue-traps captured a greater number of Cerambycidae species than black traps (Cavaletto *et al.*, 2021). In general, floral visiting species exhibited a clear preference for flower-related colors, i.e., blue, yellow, and green, while non-flower visiting species are more attracted to dark colors and dominated by long wavelengths, such as red and brown (Cavaletto *et al.*, 2021). It is important to note the colored fruit-baited traps used in the present study collected some diurnal species such as *Cosmoplatidius abare* and *Chydarteres dimidiatus dimidiatus* (Figs. 4, 6) whose adults are known to visit red powder puff flowers (*Calliandra haematocephala* Hasskarl; Mimosaceae) (Clarke & Zamalloa, 2018). However, it should be noted that virtually nothing is known about the visual ecology of the sampled species.

It is known that cerambycid beetles are collected with different sampling methods, encompassing both active and passive methods (e.g., Sakalian & Georgiev, 2011). Among the passive collection methods, fruit-baited traps have been used in ecological studies and taxonomic inventories of Cerambycidae in different Neotropical biomes, such as the Amazon rainforest (Touroult & Dalens, 2012), the Atlantic forest (Gonçalves & Louzada, 2005), the Caatinga (a semiarid Neotropical ecosystem) (Nascimento & Bravo, 2015), and the Brazilian Cerrado (Evangelista *et al.*, 2021). The bait used in this type of trap depends on the research aims and is generally based on beer or wine used alone or mixed with ripe fruit, especially banana (e.g., Allemand & Aberlenc, 1991; Touroult & Dalens, 2012; Touroult & Witté, 2020). Recently, a new bait, made from a fermented mixture of pineapple and sugarcane juice, proved to be efficient for sampling Cerambycidae in the Cerrado domain vegetation of the Distrito Federal, Central Brazil (Evangelista *et al.*, 2021). Similarly to our study, Evangelista *et al.* (2021) collected 18 species belonging to 13 genera of cerambycid beetles. Among these 18 species, only three of them were also captured in the present study (*C. dimidiatus dimidiatus*, *Sphalotrichus sericeotomentosus*, and *Trachyderes succinta succinta*). Then, our study also confirms the effectiveness of this bait for sampling cerambycid beetles in the Amazon rainforest, adding information about the combined use of different trap colors with the bait made from pineapple and sugarcane juice. Because this bait was attractive for at least three subfamilies (Cerambycinae, Lamiinae, and Prionine), we encourage its use in faunal inventories in sites where pineapple and sugarcane juice are available.

The new records presented herein contribute to a more comprehensive understanding of the distribution of Cerambycidae in the southwestern Brazilian Amazon. They include species which have wide distribution in South America, such as *Sphalotrichus bidens* and *Chydarteres dimidiatus dimidiatus*, and others commonly found in

the Amazon rainforest, such as *Cosmoplatidius abare* and *Neolampedula obliquator* (Monné, 2024a; Tavakilian & Chevillotte, 2024). The geographical distribution of *Cos. abare* in Brazil requires special attention. In the latest review of the genus *Cosmoplatidius* Gounelle, 1911, the following was reported as the type locality of *Cos. abare*: “BRASIL, Amazonas: Porto Velho (Rio Madeira), VI.1951, Dirings (MZSP)” (*ip. lit.*) (Napp & Martins, 2006). Nevertheless, Porto Velho has been part of Rondônia since the latter was created a federal territory under the name of Guaporé in 1943, and later turned into a state in 1981 already as Rondônia. Based on this, one can rightly argue that we are technically not the first to report the species from Rondônia. However, because Porto Velho was incorrectly assigned to the state of Amazonas in Napp & Martins (2006), the presence in Rondônia has been widely overlooked, including by catalogs (e.g., Monné, 2024a). Here, we are the first to expressly report *Cos. abare* for the state of Rondônia, clarifying the early inaccuracy and expanding the species’ geographical distribution to the southern border of the southwestern Brazilian Amazon. Likewise, the occurrence of *Deltosoma fernandezi* in Brazil, previously known only from French Guiana (Dalens & Giuglaris, 2014), provides additional data suggesting a wider range in the Amazon rainforest (Fig. 9). Similarly, the new record of *Corimbion nigroapicatum* from Brazil, known so far only from Colombia and Bolivia (Martins, 1970; Taboada-Verona & Botero, 2020), extends its known range within the Amazon rainforest, indicating its adaptability within this biome (Fig. 10).

The findings reported here contribute to expanding our knowledge about the cerambycid beetle fauna of the state of Rondônia (e.g., Souza & Silva, 2012; Souza *et al.*, 2021; Monné *et al.*, 2022; Nascimento *et al.*, 2024), and, indeed, of the southwestern Brazilian Amazon as a whole. We encourage the use of colored fruit-baited traps in shaded and open-canopy environments, as they can be useful not only for collecting little-known diurnal cerambycid beetles, but also for shedding light on the natural history and visual ecology of these beetles (Puker *et al.*, *in prep.*), which are still poorly studied in Neotropical landscapes.

Acknowledgements

Our research was partially supported by the Instituto Federal de Educação, Ciência e Tecnologia de Rondônia—IFRO (Edital nº 8/2022/REIT - PROPESP/IFRO, Process nº 23243.001231/2022-05). Marcela L. Monné is a fellow of the Conselho Nacional de Desenvolvimento Científico e Tecnológico—CNPq (Process nº 305584/2022-7). We thank Diego B. Mattos, Carlos Eduardo M. Brandão, and João Pedro F. Evangelista (IFRO) for the field and lab support.

References

- Allemand, R. & Aberlenc, H.P. (1991) Une méthode efficace d'échantillonnage de l'entomofaune des frondaisons: le piège attractif aérien. *Bulletin de la Société Entomologique Suisse*, 64, 293–305.
- Alvares, C.A., Stape, J.L., Sentelhas, P.C., Gonçalves, J.L.M. & Sparovek, G. (2013) Köppen's climate classification map for Brazil. *Meteorologische Zeitschrift*, 22 (6), 711–728.
<https://doi.org/10.1127/0941-2948/2013/0507>
- Bezark, L.G. (2024) *A Photographic Catalog of the Cerambycidae of the World*. Available from: <http://bezbycids.com/> (accessed 16 July 2024)
- Cavaletto, G., Faccoli, M., Marini, L., Spaethe, J., Giannone, F., Moino, S. & Rassati, D. (2021) Exploiting trap color to improve surveys of longhorn beetles. *Journal of Pest Science*, 94 (3), 871–883.
<https://doi.org/10.1007/s10340-020-01303-w>
- Clarke, R. & Zamillo, S. (2018) Bolivian anthophilous Cerambycinae (Coleoptera: Cerambycidae) host flower records. *Insecta Mundi*, 640, 1–35.
- Dalens, P.-H. & Giuglaris, J.L. (2014) *Deltosoma* Thomson, 1864 of French Guiana (Coleoptera, Cerambycidae). *Insecta Mundi*, 336, 1–9.
- Dodds, K.J., Dubois, G.D. & Hoebeke, E.R. (2010) Trap type, lure placement, and habitat effects on Cerambycidae and Scolytinae (Coleoptera) catches in the Northeastern United States. *Journal of Economic Entomology*, 103 (3), 698–707.
<https://doi.org/10.1603/EC09395>
- Evangelista, J., Rocha, M.V.C., Monné, M.L., Monné, M.A. & Frizzas, M.R. (2021) Diversity of Cerambycidae (Insecta: Coleoptera) in the Cerrado of Central Brazil using a new type of bait. *Biota Neotropica*, 21, 1–9.
<https://doi.org/10.1590/1676-0611-bn-2020-1103>
- Franca, R.R. (2015) Climatologia das chuvas em Rondônia – período 1981-2011. *Revista Geografias*, 11 (1), 44–58.
<https://doi.org/10.35699/2237-549X..13392>

- García, K. & Santos-Silva, A. (2022) New species and new records in Neoibidionini and Hexoplonini (Coleoptera: Cerambycidae: Cerambycinae). *Zootaxa*, 5134 (3), 399–414.
<https://doi.org/10.11646/zootaxa.5134.3.4>
- Gonçalves, T.T. & Louzada, J.N.C. (2005) Estratificação vertical de coleópteros carpófilos (Insecta: Coleoptera) em fragmentos florestais do Sul do estado de Minas Gerais, Brasil. *Ecología Austral*, 15 (1), 101–110.
- IBGE [Instituto Brasileiro de Geografia e Estatística] (2006) *Estado de Rondônia: vegetação*. IBGE, Rio de Janeiro, Brazil. Available from: <https://www.ibge.gov.br/geociencias/informacoes-ambientais/vegetacao/22460-vegetacao-por-estado> (accessed 15 July 2024)
- IBGE [Instituto Brasileiro de Geografia e Estatística] (2022) *Brasil: Rondônia*. IBGE, Rio de Janeiro, Brazil. Available from: <https://cidades.ibge.gov.br/brasil/ro/panorama> (accessed 16 July 2024)
- Lingafelter, S.W., Wappes, J.E. & Ledezma Arias, J. (2017) *Photographic guide to longhorned beetles of Bolivia*. Smithsonian Institution Scholarly Press, Washington, D.C., 260 pp.
- Martins, U.R. (1970) Monografia da tribo Ibidionini (Coleoptera, Cerambycinae). Parte IV. *Arquivos de Zoologia*, 16 (4), 879–1149.
<https://doi.org/10.11606/issn.2176-7793.v16i4p879-1149>
- Martins, U.R. & Monné, M.A. (2005) Tribo Cerambycini, Subtribo Sphallotrichina. In: Martins, U.R. (Org.), *Cerambycidae Sul-Americanos (Coleoptera): Taxonomia*. Sociedade Brasileira de Entomologia, São Paulo, pp. 1–218.
- Monné, M.A. (2024a) *Catalogue of the Cerambycidae (Coleoptera) of the Neotropical Region*. Part I. Subfamily Cerambycinae. Available from: <https://www.cerambycids.com/catalog/> (accessed 22 June 2024)
- Monné, M.A. (2024b) *Catalogue of the Cerambycidae (Coleoptera) of the Neotropical Region*. Part II. Subfamily Lamiinae. Available from: <https://www.cerambycids.com/catalog/> (accessed 22 June 2024)
- Monné, M.A. (2024c) *Catalogue of the Cerambycidae (Coleoptera) of the Neotropical Region*. Part III. Subfamilies Lepturinae, Necydalinae, Parandrinae, Prioninae, Spondylidinae and Families Oxypeltidae, Vesperidae and Disteniidae. Available from: <https://www.cerambycids.com/catalog/> (accessed 4 July 2024)
- Monné, M.L., Monné, M.A., Souza, D. de S. & Carli, C. da S. (2022) New distribution records of Cerambycinae (Coleoptera: Cerambycidae) in the Brazilian Amazon. *Zoologia*, 39, e22009.
<https://doi.org/10.1590/S1984-4689.v39.e22009>
- Napp, D.S. & Martins, U.R. (2006) Revisão do gênero *Cosmoplatidius* Gounelle (Coleoptera, Cerambycidae). *Revista Brasileira de Zoologia*, 23 (2), 471–479.
<https://doi.org/10.1590/S0101-81752006000200022>
- Nascimento, F.E. de L. & Bravo, F. (2015) Cerambycidae (Insecta, Coleoptera) de Morro do Chapéu, Chapada Diamantina, Bahia, Brasil. *EntomoBrasilis*, 8 (3), 235–241.
<https://doi.org/10.12741/ebrasilis.v8i3.499>
- Nascimento, F.E. de L., Botero, J.P. & Santos-Silva, A. (2024) Uncovering the richness of Cerambycidae (Coleoptera) in the Amazon region: new species, notes, and new records. *Annales de la Société Entomologique de France, New Series*, 60 (3), 216–238.
<https://doi.org/10.1080/00379271.2024.2316171>
- Nehme, M.E., Trotter, R.T., Keena, M.A., McFarland, C., Coop, J., Hull-Sanders, H.M., Meng, P., de Moraes, C.M., Mescher, M.C. & Hoover, K. (2014) Development and evaluation of a trapping system for *Anoplophora glabripennis* (Coleoptera: Cerambycidae) in the United States. *Environmental Entomology*, 43 (4), 1034–1044.
<https://doi.org/10.1603/EN14049>
- Puker, A., Ferreira, K.R. & Correa, C.M.A. (2020) Sampling flower chafer beetles (Coleoptera: Cetoniidae) in the Amazon rainforest: the role of bait types and trap installation heights. *Environmental Entomology*, 49 (5), 1096–1104.
<https://doi.org/10.1093/ee/nvaa097>
- Puker, A., Correa, C.M.A., Butzke, L.S. & Pacheco, R.A. (2021) Using aerial fruit-baited traps with different naturally fermented baits to survey scarab beetles in the Amazon rainforest. *Studies on Neotropical Fauna and Environment*, 56 (3), 238–243.
<https://doi.org/10.1080/01650521.2020.1786921>
- Reddy, G.V.P. (2007) Improved semiochemical-based trapping method for old-house borer, *Hylotrupes bajulus* (Coleoptera: Cerambycidae). *Environmental Entomology*, 36 (2), 281–286.
<https://doi.org/10.1093/ee/36.2.281>
- Rassati, D., Marini, L., Marchioro, M., Rapuzzi, P., Magnani, G., Poloni, R., Di Giovanni, F., Mayo, P. & Sweeney, J. (2019) Developing trapping protocols for wood-boring beetles associated with broadleaf trees. *Journal of Pest Science*, 92 (1), 267–279.
<https://doi.org/10.1007/s10340-018-0984-y>
- Sakalian, V. & Georgiev, G. (2011) Contribution to the knowledge of longhorn beetles (Coleoptera, Cerambycidae) from Kenya. *Biodiversity Journal*, 2 (2), 67–72.
- Souza, J.A. de O. (2020) Colonização da década de 1970, Rondônia e a BR-364. *Espaço em Revista*, 22 (1), 82–100.
<https://doi.org/10.5216/er.v22i1.63286>
- Souza, D.S. & Silva, A.A. (2012) Cerambycidae (Insecta: Coleoptera) of the Parque Natural Municipal de Porto Velho, Rondônia, Western Amazon, Brazil. *Biota Neotropica*, 12 (1), 237–240.
<https://doi.org/10.1590/S1676-06032012000100018>

- Souza, D.S., Andriolo, A., Sepúlveda, T.A. & Silveira, M.A.P.A. (2021) Unveiling the diversity of longhorn beetles (Coleoptera, Cerambycidae) in Brazilian Western Amazonia: a checklist of the Entomological Collection of the Federal University of Rondônia, Brazil. *Zootaxa*, 4981 (2), 201–233.
<https://doi.org/10.11646/zootaxa.4981.2.1>
- Taboada-Verona, C. & Botero, J.P. (2020) A new species of *Stizocera* Audinet-Serville, 1834 (Coleoptera: Cerambycidae) from Colombia with an updated key to species of the genus and new geographical records in Cerambycinae. *Papéis Avulsos de Zoologia*, 60, e20206046.
<https://doi.org/10.11606/1807-0205/2020.60.46>
- Tavakilian, G. & Chevillotte, H. (2024) *Titan: base de données internationales sur les Cerambycidae ou Longicornes*. Available from: <http://titan.gbif.fr/> (accessed 4 September 2024)
- Touroult, J. & Dalens, P.-H. (2012) Stratification verticale des coléoptères dans les forêts de Guyane: analyse à l'aide de pièges alimentaires. In: Touroult, J. (Ed.), *Contribution à l'étude des Coléoptères de Guyane. Tome VI*. Supplément au Bulletin de liaison d'ACOREP-France 'Le Coléoptériste', Paris, pp. 16–24.
- Touroult, J. & Witté, I. (2020) Beer, wine, or fruit juice: Which is best? A case study of bait efficiency to sample saproxylic beetles (Coleoptera) in an oak woodland. *The Coleopterists Bulletin*, 74 (4), 763–771.
<https://doi.org/10.1649/0010-065X-74.4.763>
- Wong, J.C.W. & Hanks, L.M. (2016) Influence of fermenting bait and vertical position of traps on attraction of Cerambycidae beetles to pheromone lures. *Journal of Economic Entomology*, 109 (5), 2145–2150.
<https://doi.org/10.1093/jee/tow197>